



ILO: **Employment & Green Jobs**

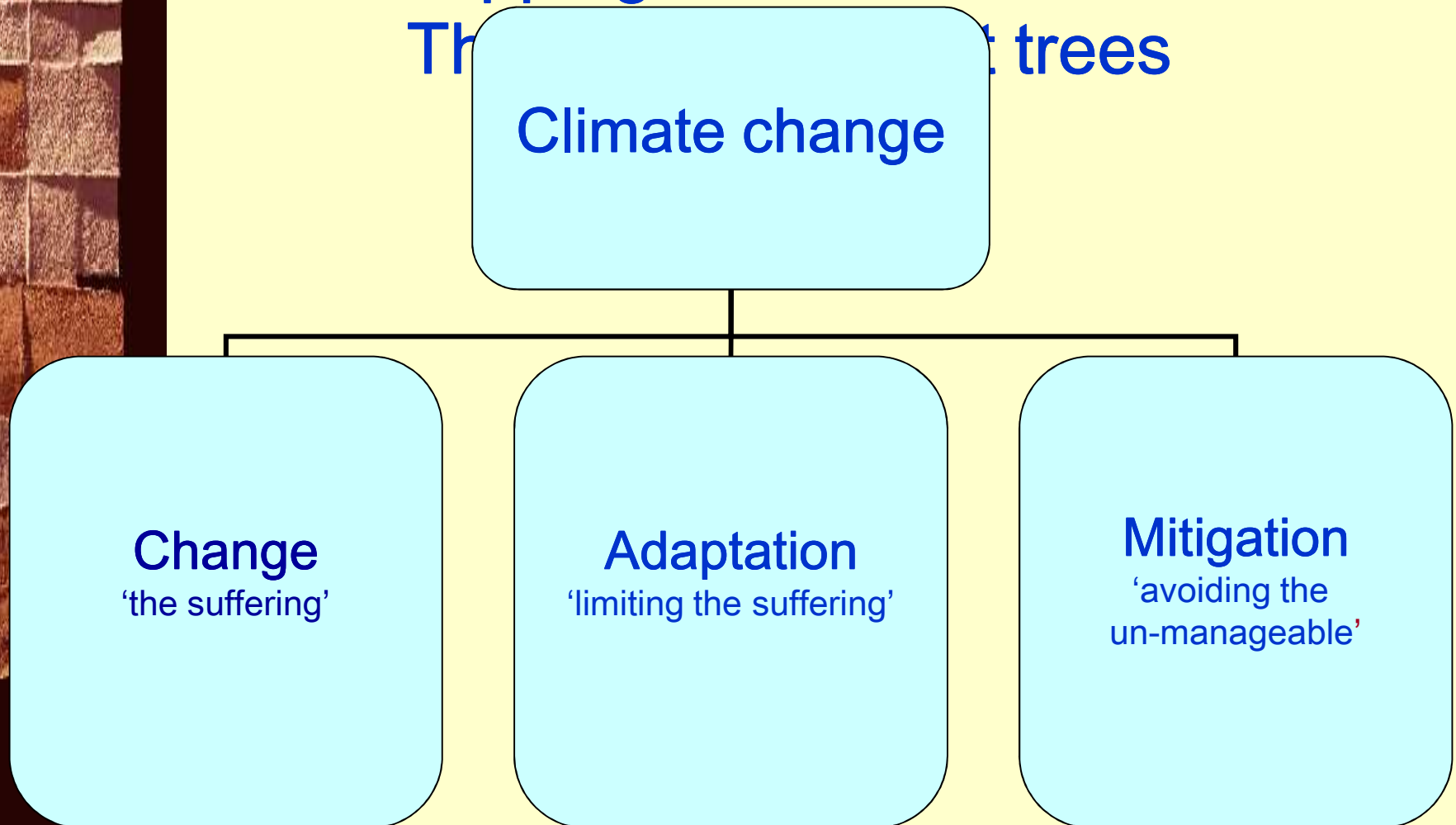


UN Delivering as One
Social consequences of climate change
15 December 2009

Sustainability issue no. 1: climate change



Mapping the links to work:
The role of trees



The suffering

e.g. Haiti

Losses due to
hurricanes in 2008
= 15 % GDP

e.g. Bangladesh

Cyclone Sidr:
> 300,000 jobs
disrupted





Adaptation

Just transition

e.g. infrastructure

20% infrastructure
water + roads
with labor-based
methods:

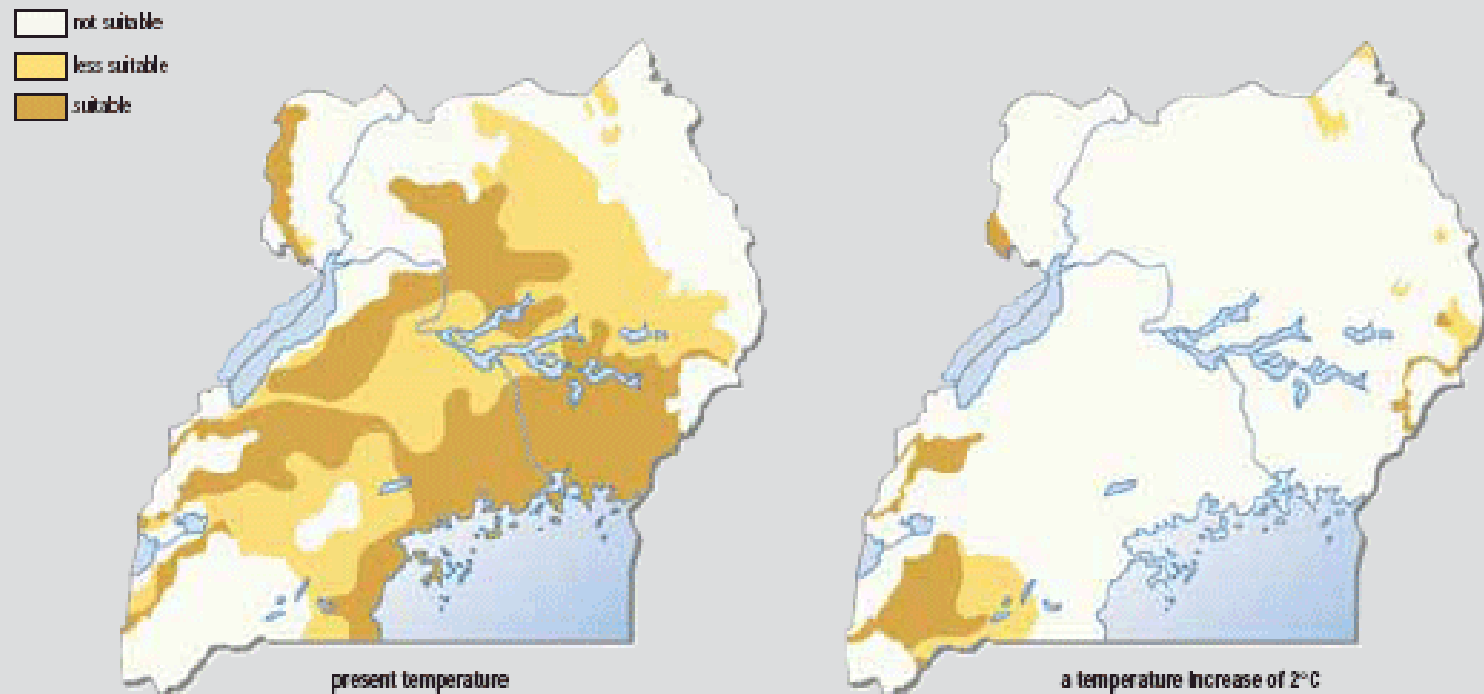


=>100 m jobs in developing countries

Adaptation and income

Ex. Coffee Uganda

Figure 1: Global warming could shrink Uganda's coffee growing areas



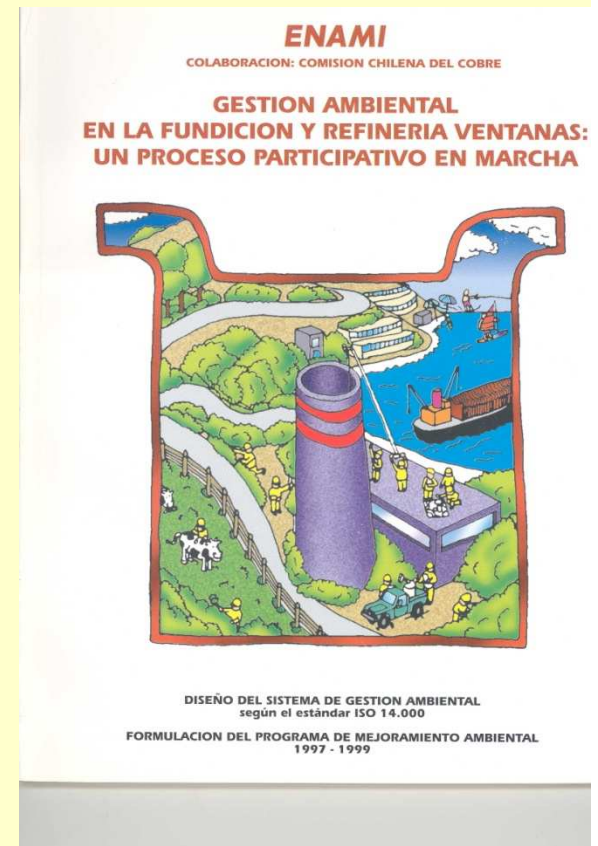
Source: GRID 2002

Untapped potential: Greening work places:

Copper refinery Chile

- Sulfuric acid
- Particulate matter
- Heavy metals ..,

Joint management-union
initiative to clean up and
save refinery

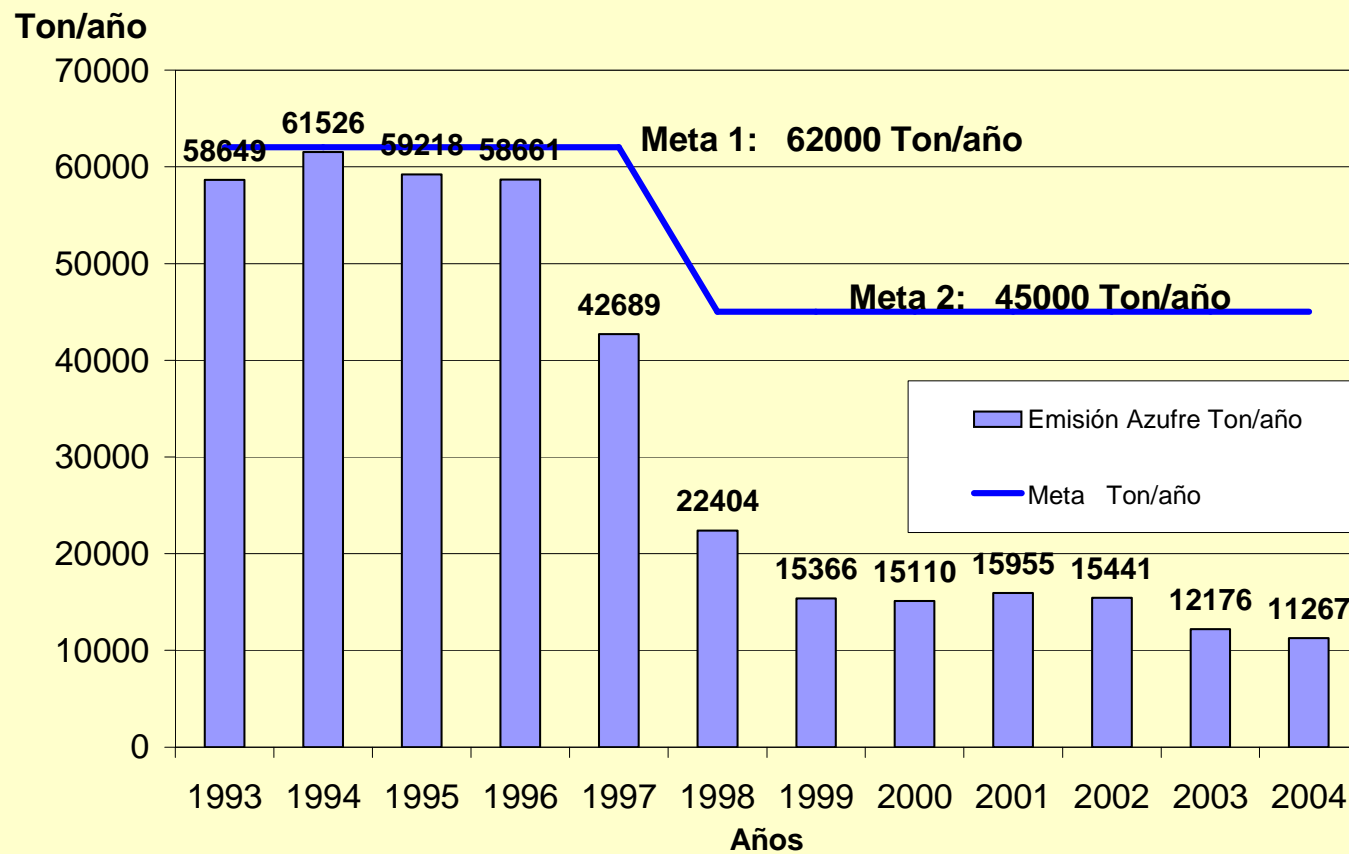




Results ...

Emissions of SO₂

Emisiones de Azufre
Fundición Ventanas





Mitigation

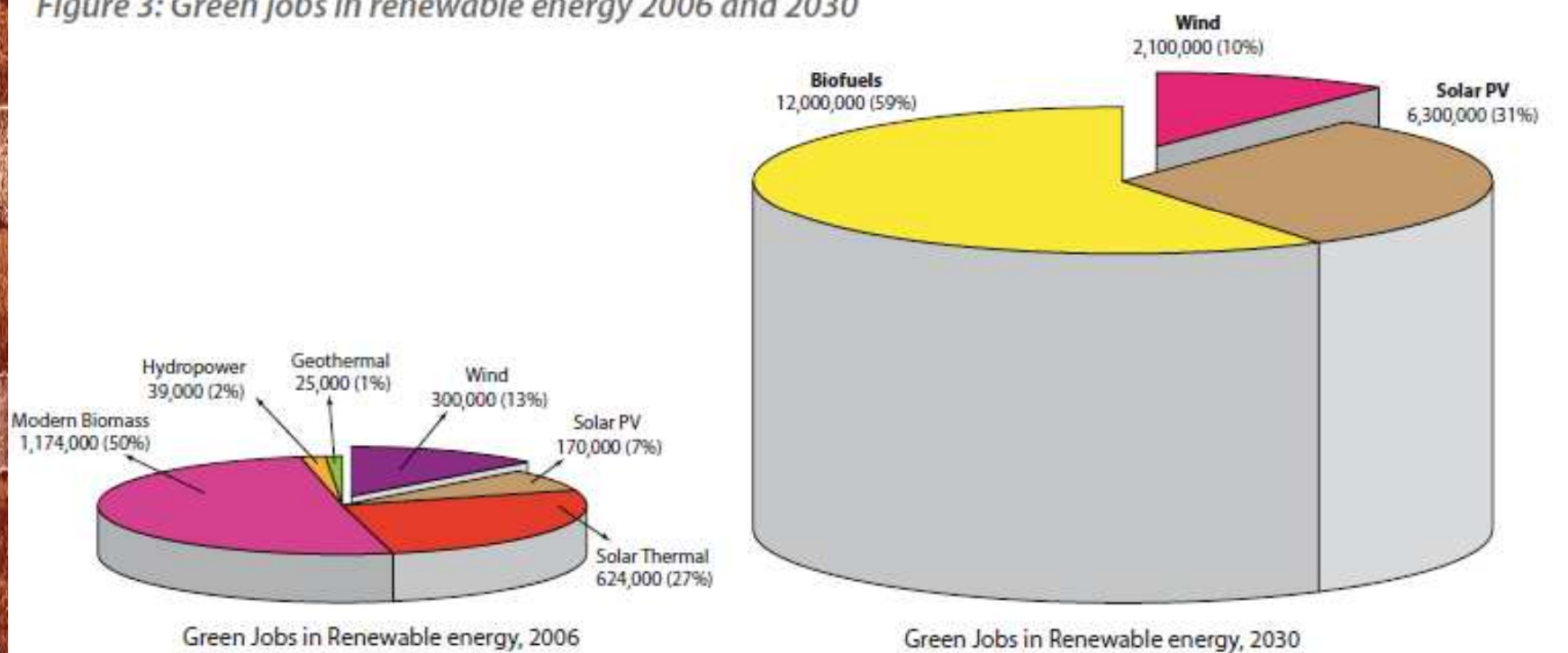
Transition to low-carbon economies:

- Energy production
- Production and consumption:
 - Energy and raw material efficiency
 - Mobility
 - Buildings
 - Agriculture and forestry
 - Energy-intensive products and services

Green Jobs Renewable energy 2006 and 2030



Figure 3: Green jobs in renewable energy 2006 and 2030



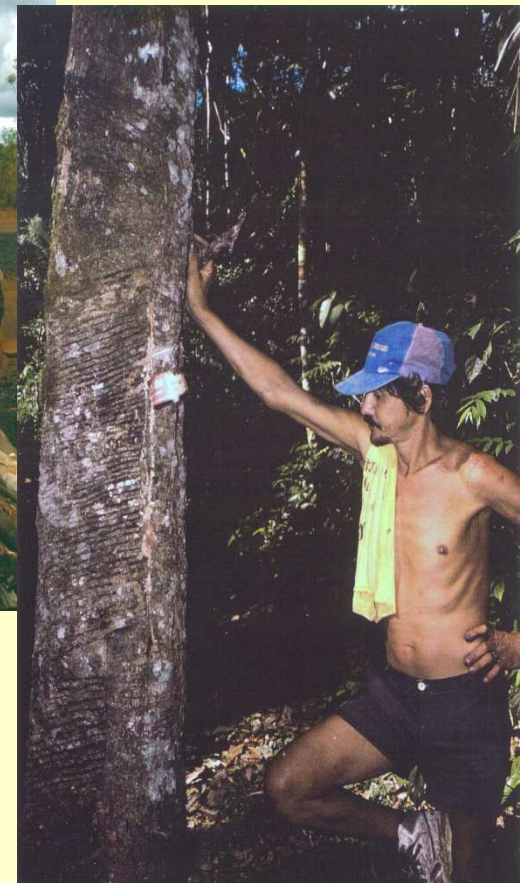
Green Jobs: upgrading of social housing

Slum population > 1 bn





Sustainable management natural resources + CO₂ bonus





Assisting countries, employers and workers





Green Jobs Program- Countries

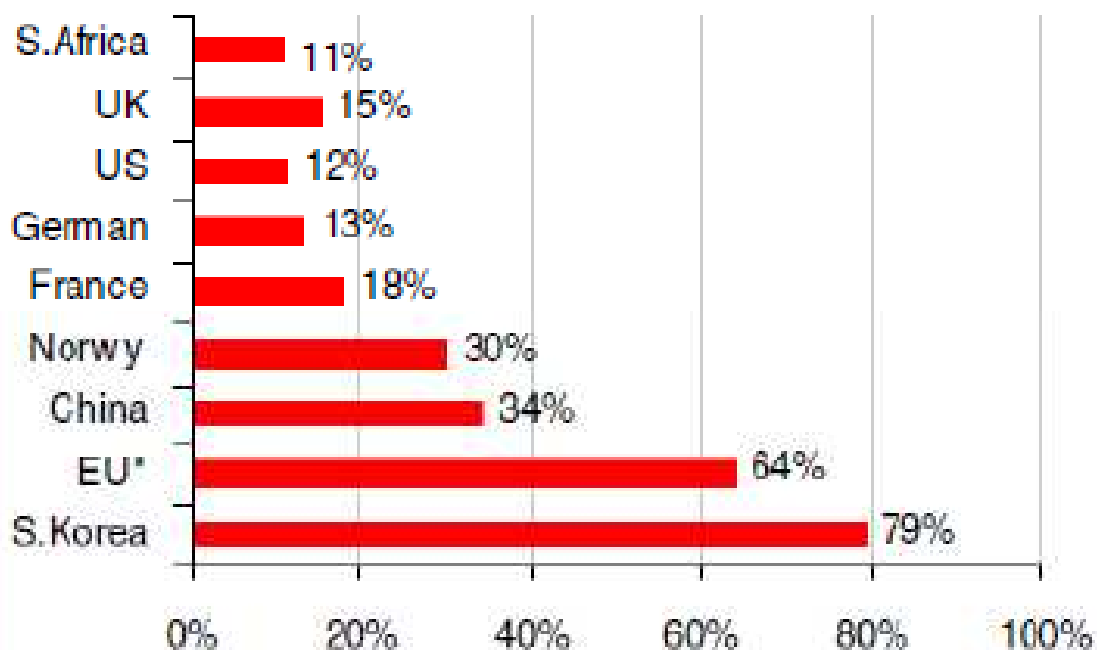


ILO Global Jobs Pact

Green economic stimulus



Green stimulus ranking as % of total stimulus



Source: HSBC, government announcements (*Includes on EU's central recovery plan, member states listed separately)

Source: HSBC (2009) 'A global green recovery? Yes but in 2010' 6 August



Back to the old dilemma?

US opinion polls (Pew)
Most important concern ?:

	Jobs	Environment
Jan 2008	61%	56%
Jan 2009	82%	41%

Reflect social consequences
in climate deal



Thank you



POSCHEN@ILO.ORG